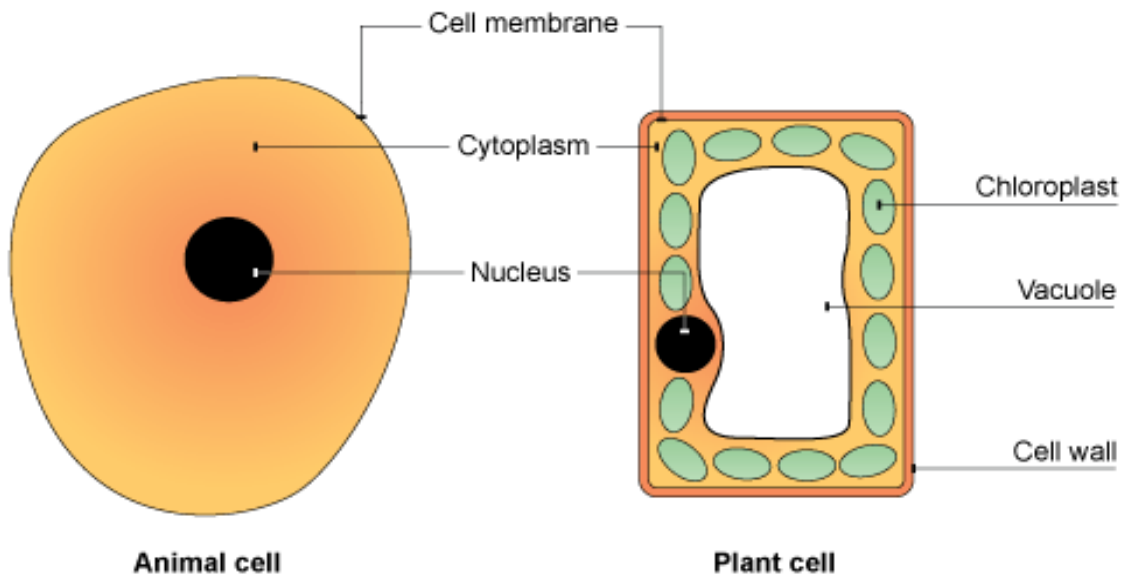


Organisms - Cells KEY LEARNING

Plant and animal cells have a cell membrane, nucleus, cytoplasm. Plant cells also have a cell wall, vacuole and chloroplasts.



Keywords	
Nucleus	Controls the cells activities.
Cell membrane	Controls what enters and leaves the cell.
Cytoplasm	Where chemical reactions occur in the cell.
Chloroplast	Absorbs sunlight energy for photosynthesis.
Cell wall	Gives the cell strength.
Vacuole	Area in a cell that contains liquid, and can be used by plants to keep the cell rigid and store substances.
Mitochondria	Part of the cell where energy is released from food molecules.

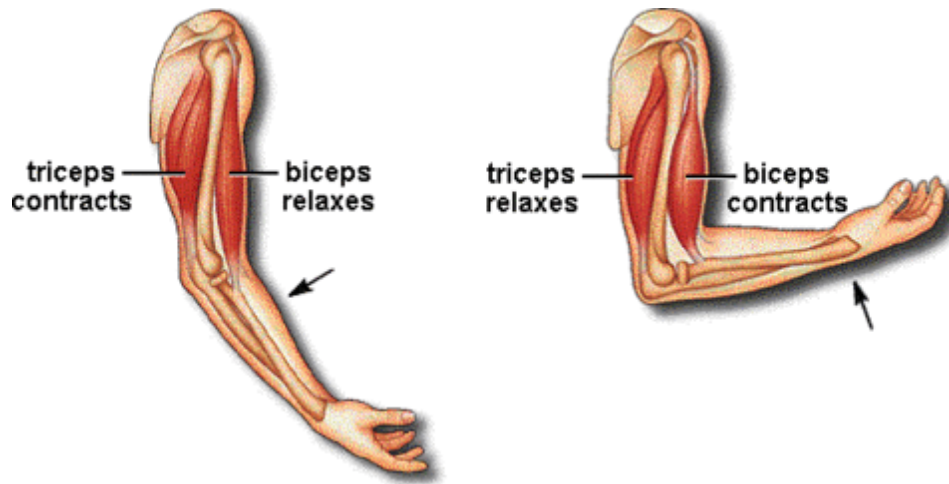
Organisms - Movement KEY LEARNING

We need a skeleton for support, protection and movement.

- A skeleton is needed for:
- movement - muscles pull on bones.
 - supporting the body.
 - protecting our organs.
 - making new blood cells.



Muscles contract and relax to help move the skeleton.



Muscles:

- Keep our heart beating
- Push food along our gut
- Pump blood through arteries
- Move our skeleton
- Help us breathe

- Muscles work in antagonistic pairs.
- When one **contracts** (gets shorter) the other **relaxes** (gets longer).
- Muscles are joined to the bone by **tendons** that do not stretch.

Key Learning Questions	Year 7 Organisms
Animal and plant cells have which parts in common?	Cell membrane.
	Nucleus.
	Cytoplasm.
Plant cells also have which parts?	Chloroplasts.
	Cell wall.
	(Accept - vacuole)
A skeleton has four jobs. Name three.	Movement
	Support
	Protection (Accept - making blood cells)
Muscles move our skeleton by doing two things. Name both.	Contract
	Relax

Key Learning Questions	Year 7 Organisms
Animal and plant cells have which parts in common?	
Plant cells also have which parts?	
A skeleton has four jobs. Name three.	
Muscles move our skeleton by doing two things. Name both.	

Key Learning Questions	Year 7 Organisms
Animal and plant cells have which parts in common?	
Plant cells also have which parts?	
A skeleton has four jobs. Name three.	
Muscles move our skeleton by doing two things. Name both.	

Key Learning Questions	Year 7 Organisms
Animal and plant cells have which parts in common?	
Plant cells also have which parts?	
A skeleton has four jobs. Name three.	
Muscles move our skeleton by doing two things. Name both.	

Extension Questions	Year 7 Organisms
Which cell part - Controls the cells activities?	Nucleus
Which cell part - Controls what enters and leaves the cell?	Cell membrane
Which cell part - Is where chemical reactions happen?	Cytoplasm
Which cell part - Absorbs sunlight energy?	Chloroplast
Which cell part - Gives the plant cell strength?	Cell wall
Name a ball and socket joint.	Shoulder or hip.
Name a hinge joint.	Elbow or knee.
What attaches muscle to bone?	Tendon
What do we call the bag in the middle of a plant cell?	Vacuole
What does a mitochondria release from sugar?	Energy

Extension Questions	Year 7 Organisms
Which cell part - Controls the cells activities?	Nucleus
Which cell part - Controls what enters and leaves the cell?	Cell membrane
Which cell part - Is where chemical reactions happen?	Cytoplasm
Which cell part - Absorbs sunlight energy?	Chloroplast
Which cell part - Gives the plant cell strength?	Cell wall
Name a ball and socket joint.	Shoulder or hip.
Name a hinge joint.	Elbow or knee.
What attaches muscle to bone?	Tendon
What do we call the bag in the middle of a plant cell?	Vacuole
What does a mitochondria release from sugar?	Energy

Extension Questions	Year 7 Organisms
Which cell part - Controls the cells activities?	Nucleus
Which cell part - Controls what enters and leaves the cell?	Cell membrane
Which cell part - Is where chemical reactions happen?	Cytoplasm
Which cell part - Absorbs sunlight energy?	Chloroplast
Which cell part - Gives the plant cell strength?	Cell wall
Name a ball and socket joint.	Shoulder or hip.
Name a hinge joint.	Elbow or knee.
What attaches muscle to bone?	Tendon
What do we call the bag in the middle of a plant cell?	Vacuole
What does a mitochondria release from sugar?	Energy

Extension Questions	Year 7 Organisms
Which cell part - Controls the cells activities?	Nucleus
Which cell part - Controls what enters and leaves the cell?	Cell membrane
Which cell part - Is where chemical reactions happen?	Cytoplasm
Which cell part - Absorbs sunlight energy?	Chloroplast
Which cell part - Gives the plant cell strength?	Cell wall
Name a ball and socket joint.	Shoulder or hip.
Name a hinge joint.	Elbow or knee.
What attaches muscle to bone?	Tendon
What do we call the bag in the middle of a plant cell?	Vacuole
What does a mitochondria release from sugar?	Energy

Extension Questions	Year 7 Organisms
Which cell part - Controls the cells activities?	
Which cell part - Controls what enters and leaves the cell?	
Which cell part - Is where chemical reactions happen?	
Which cell part - Absorbs sunlight energy?	
Which cell part - Gives the plant cell strength?	
Name a ball and socket joint.	
Name a hinge joint.	
What attaches muscle to bone?	
What do we call the bag in the middle of a plant cell?	
What does a mitochondria release from sugar?	

Extension Questions	Year 7 Organisms
Which cell part - Controls the cells activities?	
Which cell part - Controls what enters and leaves the cell?	
Which cell part - Is where chemical reactions happen?	
Which cell part - Absorbs sunlight energy?	
Which cell part - Gives the plant cell strength?	
Name a ball and socket joint.	
Name a hinge joint.	
What attaches muscle to bone?	
What do we call the bag in the middle of a plant cell?	
What does a mitochondria release from sugar?	

Extension Questions	Year 7 Organisms
Which cell part - Controls the cells activities?	
Which cell part - Controls what enters and leaves the cell?	
Which cell part - Is where chemical reactions happen?	
Which cell part - Absorbs sunlight energy?	
Which cell part - Gives the plant cell strength?	
Name a ball and socket joint.	
Name a hinge joint.	
What attaches muscle to bone?	
What do we call the bag in the middle of a plant cell?	
What does a mitochondria release from sugar?	

Extension Questions	Year 7 Organisms
Which cell part - Controls the cells activities?	
Which cell part - Controls what enters and leaves the cell?	
Which cell part - Is where chemical reactions happen?	
Which cell part - Absorbs sunlight energy?	
Which cell part - Gives the plant cell strength?	
Name a ball and socket joint.	
Name a hinge joint.	
What attaches muscle to bone?	
What do we call the bag in the middle of a plant cell?	
What does a mitochondria release from sugar?	

